

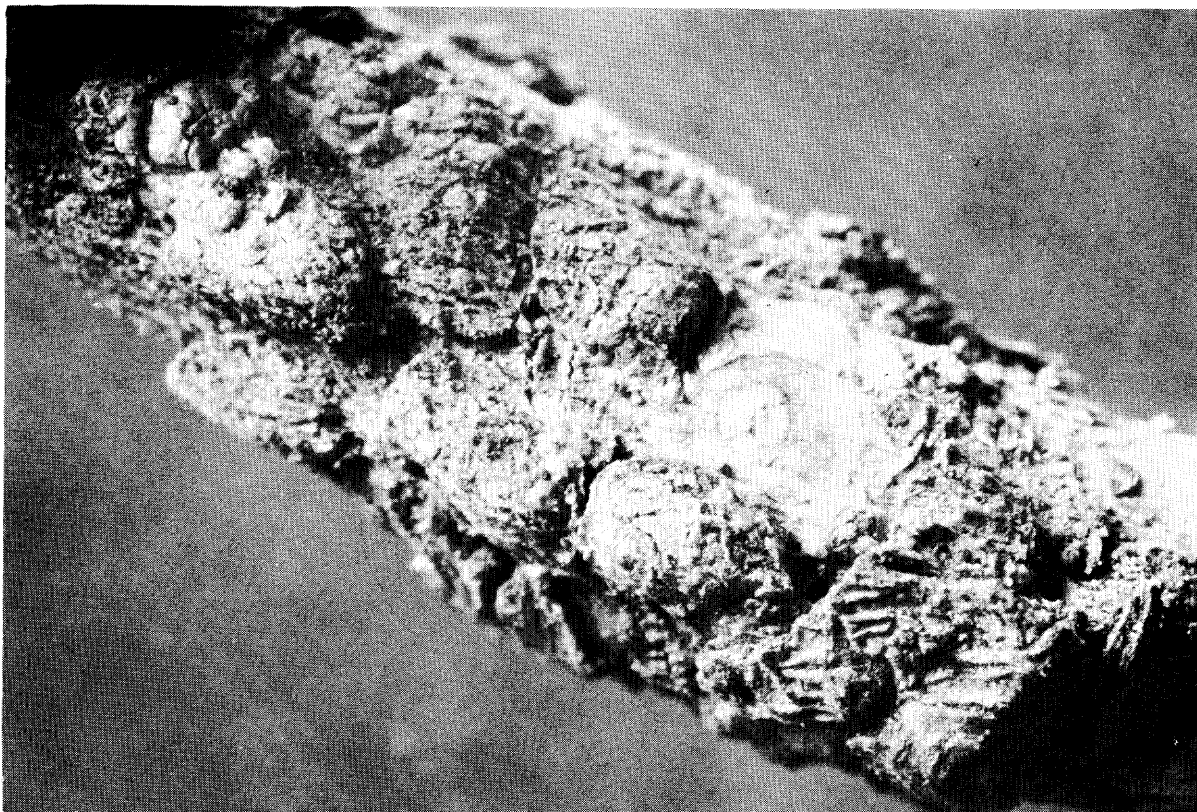
CAMELLIA MINING SCALE (PSEUDAONIDIA CLAVIGERA (CKLL.))^{1/}

G. W. DEKLE

INTRODUCTION:--CAMELLIA MINING SCALE, NEW TO CONTINENTAL UNITED STATES, IS ESTABLISHED IN ST. PETERSBURG, PINELLAS COUNTY, FLORIDA. A SURVEY FOR THIS SCALE BY DIVISION OF PLANT INDUSTRY PERSONNEL HAS BEEN UNDER WAY SINCE APRIL 2, 1962. TEN PROPERTIES AND EIGHT HOSTS FOR THIS SCALE HAVE BEEN FOUND IN ST. PETERSBURG. ALL INFESTED NURSERIES ARE QUARANTINED. NO INFESTATIONS HAVE BEEN FOUND IN OTHER COUNTIES OF FLORIDA.

DISTRIBUTION AND HOST RECORDS:--AFRICA - ON CAMELLIA; AUSTRALIA - ON MACADAMIA; CANAL ZONE - ON EUGENIA MYRTIFOLIA (AUSTRALIAN BUSH-CHERRY), GENIP SP. (GENIP), INGA SP., AND MYRICARIA; FORMOSA - ON CAMELLIA; HAWAII - ON CROTON, EUGENIA ALBA, EUGENIA DOMBEYI (GRUMIXAMERIA TREE), GARDENIA ANGUSTA (CAPE-JASMINE), HIBISCUS SP. AND PLUMERIA; JAVA - ON MANGO; UNITED STATES (FLORIDA) - ON AZALEA, CAMELLIA SASANQUA, CAMELLIA SP., LIGUSTRUM, OAK SEEDLING, OSMANTHUS, SAMBAC JASMINE AND VIBURNUM. THE SCALE HAS ALSO BEEN REPORTED FROM SEYCHELLES, JAPAN, TAIWAN AND GUAM.

DESCRIPTION AND FIELD OBSERVATIONS:--THE SCALE IS BURROWING IN HABIT. THE FEMALE BURIES ITSELF COMPLETELY UNDER THE EPIDERMAL LAYER OF THE TWIGS, BRANCHES AND TRUNKS OF THE PLANTS IT INFESTS. EXCEPT FOR THE BRONZE FIRST EXUVIAE (FIRST SHED LARVAL SKIN), THE ARMOR IS CONCEALED BENEATH THE EPIDERMIS. THE SCALE ARMOR IS 2MM IN DIAMETER, SLIGHTLY CONVEX, THE EXUVIAE MARGINAL OR SUB-MARGINAL; THIS CAN BEST BE SEEN WHEN THE UNDERSIDE OF THE ARMOR IS EXAMINED WITH A HAND LENS. ALL SLIGHTLY RAISED AREAS OR "BLISTERS" ON THE BARK SHOULD BE EXAMINED CLOSELY. A WHITE CIRCULAR SPOT ON THE BARK IS VISIBLE WHEN THE SCALE IS REMOVED. CAMELLIA MINING SCALE MAY BE CONFUSED WITH PEONY SCALE (PSEUDAONIDIA PAEONIAE (CKLL.)), CAMPHOR SCALE (PSEUDAONIDIA DUPLEX (CKLL.)) OR TESSERATA SCALE (DUPLASPIDIOTUS TESSERATUS (DE CHARMOY)). THE HIGHLY CONVEX ARMOR OF THE ABOVE SCALES SEPARATES THEM FROM CAMELLIA MINING SCALE WHICH HAS A SLIGHTLY CONVEX ARMOR.



CAMELLIA MINING SCALE ENLARGED 15 TIMES. NOTE LIGHT AREA WHERE SCALE ARMOR HAS BEEN REMOVED. (PHOTO BY J. L. MESSEC, DIV. OF PLANT INDUSTRY).