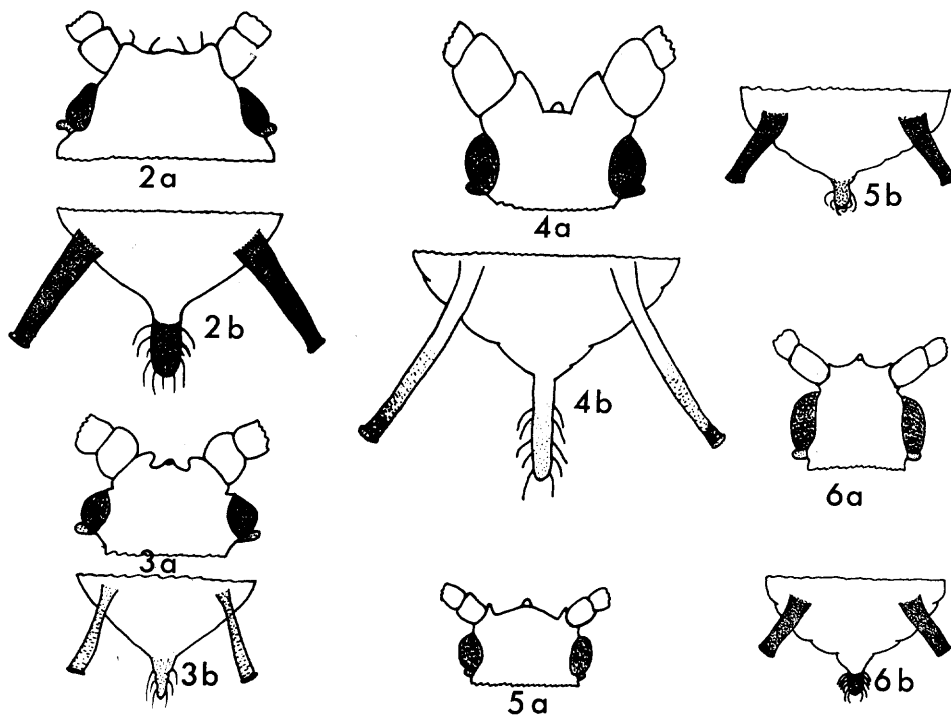
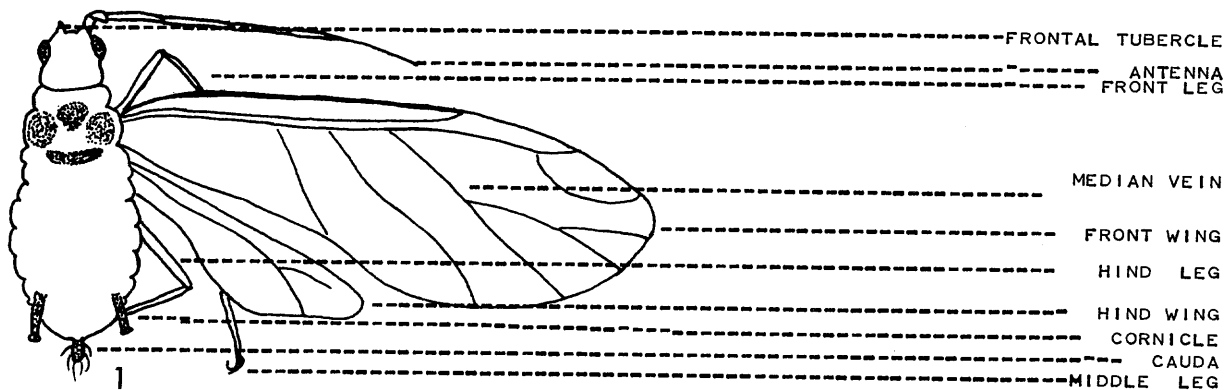


A FIELD KEY TO THE CITRUS APHIDS IN FLORIDA¹

H. A. DENMARK

WINGED FORMS

1. MEDIAN VEIN BRANCHED ONCE, BODY DARK BROWN IN COLOR. (FIGS. 1, 2A, AND 2B). . . . TOXOPTERA AURANTII (FONSC.)
 MEDIAN VEIN BRANCHED TWICE. 2
2. FRONTAL TUBERCLES PROMINENT AND CONVERGING, CORNICLES SLIGHTLY SWOLLEN, CAUDA SHORT AND TAPERING, PALE GREEN BODY. (FIGS. 3A AND 3B) MYZUS PERSICAE (SULZ.)
 FRONTAL TUBERCLES NOT CONVERGING 3
3. FRONTAL TUBERCLES PROMINENT AND DIVERGING, VERTEX CONCAVE, CORNICALS LONG AND CYLINDRICAL, DUSKY AT TIP, CAUDA LONG AND TAPERING, BODY PALE GREEN. (FIGS. 4A AND 4B) MACROSIPHUM EUPHORBIAE (THOMAS)
 FRONTAL TUBERCLES NOT PROMINENT, VERTEX CONVEX. 4
4. CAUDA DUSKY TO BLACKISH WITH 2 TO 3 HAIRS ON EACH SIDE, CORNICLES BLACK AND SLIGHTLY TAPERING. (FIGS. 5A AND 5B) APHIS GOSSYPII GLOVER
 CAUDA BLACK WITH MORE THAN 3 HAIRS ON EACH SIDE, BUT SIMILAR TO A. GOSSYPII. (FIGS. 6A AND 6B)
 APHIS SPIRAECOLA PATCH

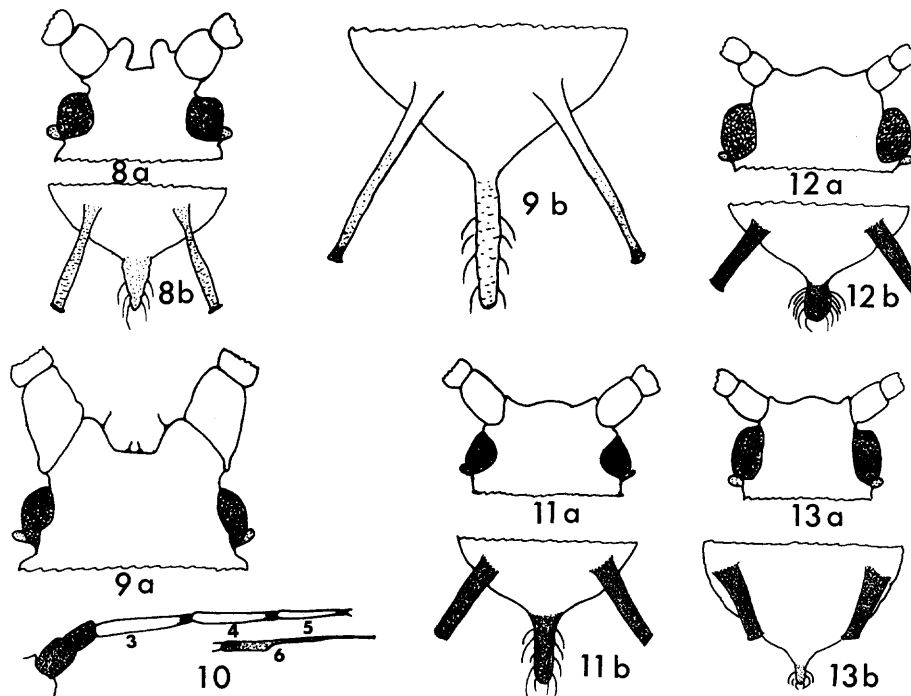
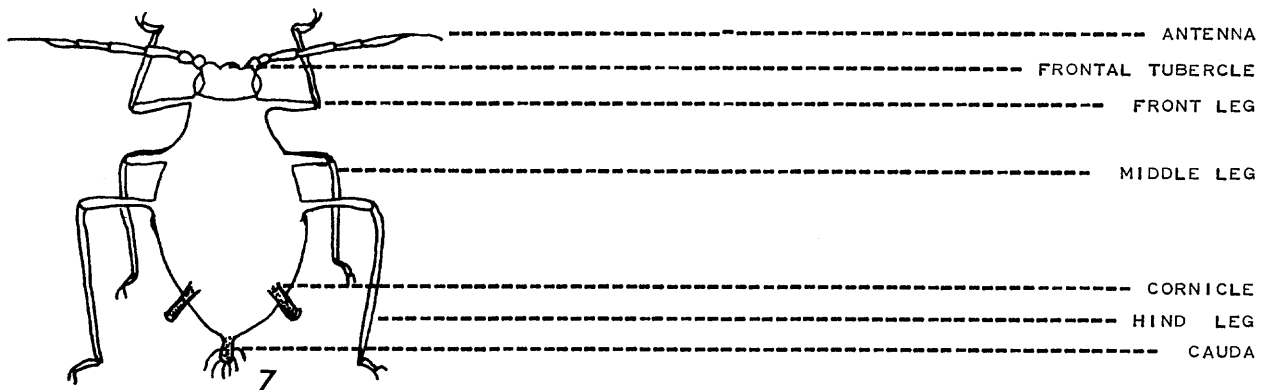


Figs. 1-6b

¹CONTRIBUTION No. 18, ENTOMOLOGY SECTION

WINGLESS FORMS

1. FRONTAL TUBERCLES PROMINENT AND CONVERGING, CORNICLES SLIGHTLY SWOLLEN, CAUDA TAPERING (FIGS. 8A AND 8B). MYZUS PERSICAE (SULZ.)
- FRONTAL TUBERCLES PROMINENT BUT NOT CONVERGING 2
2. FRONTAL TUBERCLES PROMINENT AND DIVERGING, CORNICLES AND CAUDA LONG AND SLENDER, OVER-ALL SIZE LARGE. (FIGS. 9A AND 9B) MACROSIPHUM EUPHORBIAE (THOMAS)
- FRONTAL TUBERCLES NOT PROMINENT AND NOT DIVERGING 3
3. BODY DARK BROWN, ANTENNAL SEGMENTS 3, 4, AND 5 LIGHTER IN COLOR THAN BODY BUT DARKER AT DISTAL ENDS. (FIGS. 10, 11A, AND 11B). TOXOPTERA AURANTII (FONSC.)
- BODY NOT DARK BROWN 4
4. BODY LIGHT TO DARK GREEN WITH BLACK CAUDA WITH 5 OR 6 HAIRS. (FIGS. 12A AND 12B).
- APHIS SPIRAECOLA PATCH
- CAUDA DUSKY WITH 2 OR 3 HAIRS, OTHERWISE SIMILAR TO A. SPIRAECOLA. (FIGS. 13A AND 13B)
- APHIS GOSSYPII GLOVER



Figs.7-13 b