

PUTEANUM SCALE (ASTEROLECANIUM PUTEANUM RUSSELL)  
(HOMOPTERA: ASTEROLECANIIDAE)  
G. W. DEKLE

**INTRODUCTION:** THIS SOFT SCALE INSECT BELONGS TO THE FAMILY OF PIT-MAKING SCALES. HOWEVER, SOME SPECIES NEVER PRODUCE PITS ON PLANTS THEY INFEST. PUTEANUM SCALE IS A PIT-PRODUCING SOFT SCALE THAT IS INCONSPICUOUS ON ITS HOST. PITTED AND DISTORTED STEMS USUALLY ARE THE SIGNS FIRST OBSERVED ON INFESTED PLANTS.

**DISTRIBUTION:** FLORIDA, GEORGIA, ALABAMA, MARYLAND, VIRGINIA, NORTH CAROLINA AND DELAWARE. GRAVID FEMALES HAVE BEEN COLLECTED AT MACCLENNY, FLORIDA DURING MARCH.

**HOSTS:** AMERICAN HOLLY (ILEX OPACA AIT.) AND (ILEX OPACA AIT. VAR. EAST PALATKA); CHINESE HOLLY (ILEX CORNUTA LINDL.); JAPANESE HOLLY (ILEX CRENATA VAR. ROTUNDIFOLIA HORT); YAUPON (ILEX VOMITORIA AIT.); AND BUMELIA SP.

**DESCRIPTION:** THE FEMALE COVERING IS OVAL, SLIGHTLY CONVEX, TRANSLUCID, GLASSY, YELLOWISH-GREEN, AND ABOUT THE SAME SIZE AS THE HEAD OF A STRAIGHT PIN (FIG. 1). THE MARGINAL FRINGE IS YELLOWISH; PINKISH IN GRAVID FEMALES. A REDDISH-BROWN, HALF-MOON-SHAPED AREA, ABOUT 1/3 THE SIZE OF THE SCALE, IS VISIBLE THROUGH THE SEMI-TRANSPARENT COVER OF GRAVID FEMALES.

**ECONOMIC IMPORTANCE:** THIS INSECT IS OCCASIONALLY A DESTRUCTIVE PEST TO HOLLY (ILEX SPP.) IN FLORIDA (FIG. 2). HOLLY PLANTS PRODUCED IN ORNAMENTAL NURSERIES NEED TO BE INSPECTED FREQUENTLY FOR THIS SCALE.

**CONTROL:** MALATHION, ETHION OR DIMETHOATE (CYGON) IS RECOMMENDED BY THE FLORIDA AGRICULTURAL EXPERIMENT STATION.

**REFERENCES USED:**

- MERRILL, G.B. 1953. A REVISION OF THE SCALE INSECTS OF FLORIDA. STATE PLANT BOARD FLORIDA BULL. 1, 143 P.  
RUSSELL, LOUISE M. 1941. A CLASSIFICATION OF THE SCALE INSECT GENUS ASTEROLECANIUM. U. S. DEPT. OF AGR. MISC. PUB. 424.

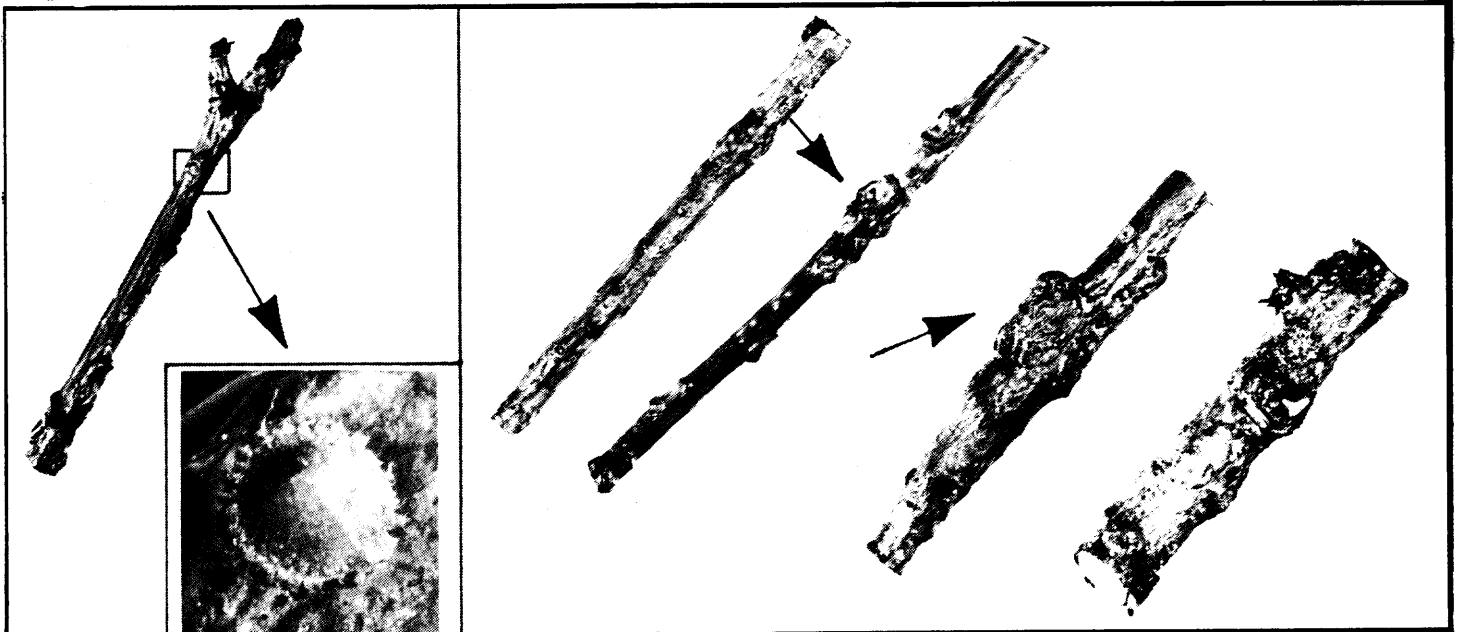


FIG. 1 - PUTEANUM SCALE  
(INSERT ENLARGED 6X)

FIG. 2 - INJURY TO STEM OF HOLLY (ILEX ROTUNDIFOLIA)  
NOTE PITS AND DISTORTED STEM