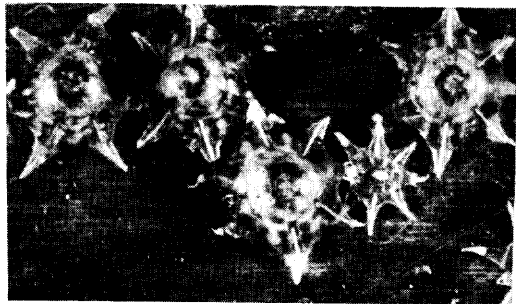
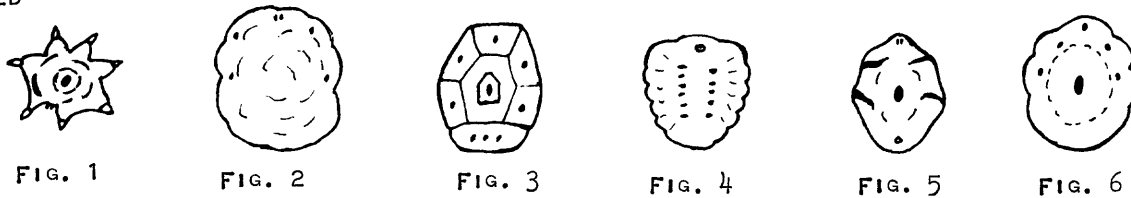


1
 A FIELD KEY TO WAX SCALES IN FLORIDA
 G. W. DEKLE

1. DORSAL VIEW OF WAX COVER STAR-SHAPED; DIAMETER ACROSS RAYS 3.5-4.5 MM. (FIG. 1)
 STELLATE SCALE (VINSONIA STELLIFERA (WESTW.))* (FIG. 1A)
- 1¹ DORSAL VIEW OF WAX COVER CIRCULAR TO OVAL (FIGS. 2, 3, 4, 5, 6) - - - - - 2
- 2(1¹) WAX COVER SOFT, GREASY, CREAMY-WHITE, ASSYMMETRICAL; DIAMETER 5-8 MM. (FIG. 2)
 JAPANESE WAX SCALE (CEROPLASTES CERIFERUS (AND.)) (FIG. 2A)
- 2¹ WAX COVER FIRM, NOT GREASY, DIRTY-WHITE, PINKISH OR ROSE RED; USUALLY SYMMETRICAL - - - - - 3
- 3(2¹) WAX COVER DIVIDED INTO PLATES WITH A DARK BLOB IN THE CENTER OF EACH SIDE PLATE
 EXCEPT FOR ONE WHICH HAS THREE DARK BLOBS; HEIGHT ALMOST EQUAL TO WIDTH; 5 MM LONG
 X 4 MM WIDE. (FIG. 3)
 BARNACLE SCALE (CEROPLASTES CIRRIPIEDIFORMIS COMST.) (FIG. 3A)
- 3¹ WAX COVER WITHOUT PLATES (FIGS. 4, 5, 6) - - - - - 4
- 4(3¹) WAX COVER HAND-GRENADE-SHAPED; 2.5-3.5 MM LONG. (FIG. 4)
 HAND-GRENADE SCALE (CEROCOCCUS SP.) (FIG. 4A)
- 4¹ WAX COVER NOT HAND-GRENADE-SHAPED (FIGS. 5 AND 6) - - - - - 5
- 5(4¹) WAX COVER ROSE RED; LONGER THAN WIDE; TWO PAIRS OF WHITE SPIRACULAR BANDS EXTEND
 DORSALLY ON COVER; 3.5-4.5 MM LONG. (FIG. 5)
 RED WAX SCALE (CEROPLASTES RUBENS MASK.)* (FIG. 5A)
- 5¹ WAX COVER DIRTY-WHITE TO PINKISH; APPROXIMATELY CIRCULAR; SPIRACULAR AREAS DEPRESSED
 AND SOMETIMES DIRTIER; COVER ONE-HALF AS HIGH AS THE DIAMETER; DIAMETER 2-3 MM (FIG. 6)
 FLORIDA WAX SCALE (CEROPLASTES FLORIDENSIS COMST.) (FIG. 6A)

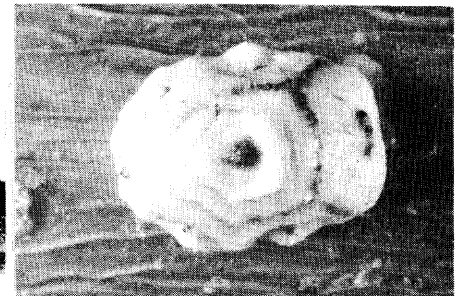
* ERADICATED



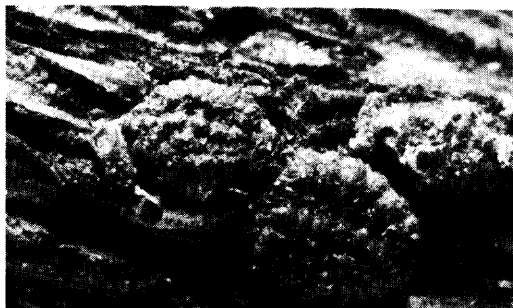
1A



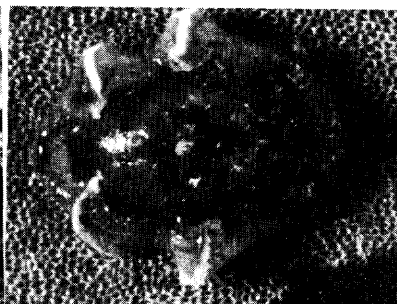
2A



3A



4A



5A



6A