

NATAL FRUIT FLY (CERATITIS ROSA KARSCH)¹
(DIPTERA: TEPHRTIDAE)

H. V. WEEMS, JR.

SYNONYMS: PTERANDRUS ROSA KARSCH

INTRODUCTION: THE NATAL FRUIT FLY (CERATITIS ROSA KARSCH) (FIG. 1) WAS DESCRIBED IN 1887 FROM SPECIMENS COLLECTED AT DELAGOA BAY, MOZAMBIQUE. BY 1900 IT WAS RECOGNIZED AS A PEST OF ORCHARD FRUITS THROUGHOUT MUCH OF NATAL PROVINCE, REPUBLIC OF SOUTH AFRICA, AND TODAY IT IS CONSIDERED TO BE THE MOST COMMON FRUIT FLY OF ECONOMIC IMPORTANCE IN SOUTHERN RHODESIA. FOLLOWING ITS ACCIDENTAL INTRODUCTION INTO THE ISLAND OF MAURITIUS ABOUT 1953, THIS FLY BECAME FIRMLY ESTABLISHED AND LARGELY REPLACED THE MEDITERRANEAN FRUIT FLY (CERATITIS CAPITATA WIEDEMANN) AS A PEST OF FRUITS. IN SOUTH AFRICA THE NATAL FRUIT FLY RANKS SECOND IN IMPORTANCE ONLY TO THE MEDITERRANEAN FRUIT FLY, AND AT TIMES IT IS AN EVEN MORE SERIOUS PEST. FOR EXAMPLE, 50-100 PER CENT OF PLUMS WERE REPORTEDLY INFESTED IN A SOUTH AFRICAN LOCALITY ONE YEAR DESPITE CONTROL MEASURES WHICH WERE APPLIED.

THE NATAL FRUIT FLY HAS BEEN INTERCEPTED IN THE UNITED STATES IN A SHIPMENT OF PEACHES ARRIVING FROM SOUTH AFRICA, BUT IT NEVER HAS BEEN CAPTURED AS AN ESCAPEE IN THE UNITED STATES. IT CONTINUES TO CONSTITUTE A POTENTIAL THREAT TO FLORIDA AGRICULTURE. IF IT WERE ACCIDENTALLY INTRODUCED INTO FLORIDA AND ALLOWED TO GAIN A Foothold, THE NATAL FRUIT FLY COULD PROVE TO BE FULLY AS SERIOUS A MENACE AS THE MEDITERRANEAN FRUIT FLY.

DISTRIBUTION: ANGOLA, KENYA, MOZAMBIQUE, NIGERIA, NYASALAND, REPUBLIC OF SOUTH AFRICA (NATAL), SOUTHERN RHODESIA, SWAZILAND, TANGANYIKA, UGANDA, AND THE ISLANDS OF MAURITIUS, REUNION, AND ZANZIBAR.

HOSTS: THIS FRUIT FLY INFESTS MANY KINDS OF ORCHARD FRUITS AND WILD FRUITS, INCLUDING PEACH (PRUNUS PERSICA), NECTARINE (PRUNUS PERSICA NECTARINA), APRICOT (PRUNUS ARMENIACA), PLUM (PRUNUS DOMESTICA), APPLE (MALUS SYLVESTRIS), PEAR (PYRUS COMMUNIS), QUINCE (CYDONIA OBLONGA), PERSIMMON (DIOSPYROS VIRGINIANA), FIG (FICUS CARICA), LOQUAT (ERIOBOTRYA JAPONICA), CITRUS, INCLUDING ORANGE (CITRUS spp.), GUAVA (PSIDIUM spp.), ROSEAPPLE (SYZYGIIUM JAMBOS), COFFEE (COFFEA ARABICA), AVOCADO (PERSEA AMERICANA), BLACKBERRY (RUBUS spp.), MANGO (MANGIFERA INDICA), SAPODILLA (ACHRAS SAPOTA), PAPAYA (CARICA PAPAYA), CUSTARD APPLE (ANNONA RETICULATA), SOURSOP (ANNONA MURICATA), NATAL-ORANGE (STRYCHNOS SPINOSA), KEI-APPLE OR UMKOKOLO (DOVYALIS CAFFRA), CHRYSOPHYLLUM NATALENSE, EUGENIA CORDATA, GARCINIA LIVINGSTONEI, OPUNTIA sp., RAWSONIA LUCIDA, SOLANUM AURICULATUM, AND SOLANUM GIGANTEUM. PEACHES AND GUAVAS ARE PARTICULARLY FAVORED. NUT CROPS APPEAR TO BE IMMUNE FROM ATTACK.

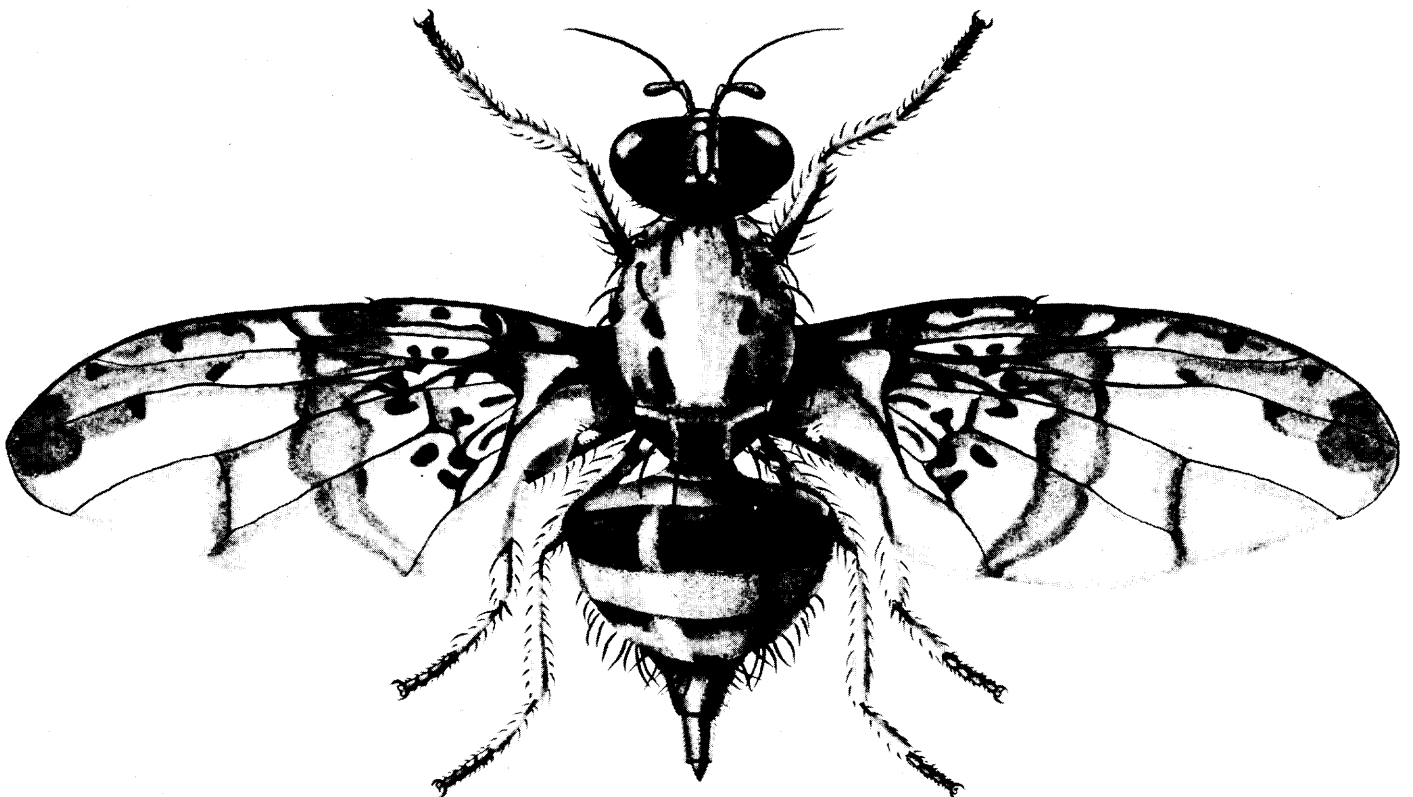


FIG. 1. CERATITIS ROSA KARSCH, ADULT FEMALE

¹CONTRIBUTION No. 86, ENTOMOLOGY SECTION

LIFE HISTORY AND HABITS: THE NATAL FRUIT FLY OVERWINTERS IN THE ADULT STAGE AND IS ABLE TO WITHSTAND TEMPERATURES AS LOW AS 20 F, PROVIDED THE WARMING PERIOD COMES SLOWLY. FOOD, WATER, AND SHELTER ARE MORE IMPORTANT OVERWINTERING FACTORS THAN TEMPERATURE. OVERWINTERING FLIES FEED ON HONEYDEW AND REQUIRE AN ABUNDANT WATER SUPPLY. THIS SPECIES IS NOT ATTRACTED TO TRAPS DURING THE WINTER MONTHS. EGGS ARE LAID 10-20 AT A TIME JUST BELOW THE FRUIT SURFACE. EGGS MAY BE LAID IN UNBLEMISHED FRUIT AND IN RIPE OR UNRIPE FRUIT. EGGS USUALLY HATCH WITHIN FOUR DAYS AFTER OVIPOSITION, BUT MAY REQUIRE LONGER THAN FOUR DAYS DURING COLD WEATHER. THE THREE LARVAL STAGES AND A PREPUPAL STAGE OCCUPY A PERIOD OF ABOUT 12 DAYS. PUPATION TAKES PLACE IN THE SOIL, AND THE PUPAL STAGE LASTS 10-20 DAYS. FEMALES USUALLY BEGIN OVIPOSITION IN ABOUT SEVEN DAYS. ADULTS MAY LIVE FOR SEVERAL MONTHS. ENTOMOLOGISTS ESTIMATE THAT UNDER CENTRAL FLORIDA CONDITIONS THERE WOULD BE APPROXIMATELY TEN GENERATIONS PER YEAR.

IDENTIFICATION: THIS FRUIT FLY CLOSELY RESEMBLES THE MEDITERRANEAN FRUIT FLY IN APPEARANCE. IT AVERAGES SLIGHTLY LARGER AND HAS THE CHARACTERISTIC PICTURE WINGS AND DARK BLACK SPOTS ON THE THORAX. THE ARISTA OF THE ANTENNA IS PLUMOSE, WHILE THAT OF THE MEDFLY BEARS ONLY SHORT PUBESCENCE. THE FRONS OF THE MALE LACKS THE PAIR OF CONSPICUOUS SPATULATE SETAE WHICH IS FOUND ON THE MALE MEDFLY. THE MESOTHORACIC TIBIAE OF THE MALES ARE CLOTHED WITH DORSAL AND VENTRAL BRUSHES OF ELONGATED, BLUISH-BLACK SCALES, LACKING IN THE MEDFLY. THE OVIPOSITOR SHEATH OF THE FEMALE IS SHORTER THAN THE WIDTH AT ITS BASE. LENGTH OF THE FLY 4-5 MM.

REFERENCES:

- FROGGATT, WALTER W. 1909. REPORT ON PARASITIC AND INJURIOUS INSECTS. 1907-1908. NEW SOUTH WALES DEPT. OF AGR. 115 P, 8 PLS.
- ANONYMOUS. 1928. FRUIT-FLY CAMPAIGN AT CEDARA. REV. APPL. ENT. (A)15:521. 1927. (FROM FARMING IN SOUTH AFRICA 1(6):186. PRETORIA. SEPT. 1962.)
- USDA, SURVEY AND DETECTION OPERATIONS, PLANT PEST CONTROL DIVISION, AGR. RESEARCH SERVICE. ANONYMOUS. 1963. INSECTS NOT KNOWN TO OCCUR IN THE UNITED STATES. COOP. ECON. INSECT REPORT 13:1-32.
- NATAL FRUIT FLY (CERATITIS ROSA KARSCH), P 14-16, 2 FIG.