

KEY TO GREENHOUSE SOFT SCALE INSECTS (COCCIDAE: HOMOPTERA) <sup>1</sup>

G. W. DEKLE

**INTRODUCTION:** SCALE INSECTS ARE PLANT PARASITES. WHENEVER INFESTATIONS BECOME ESTABLISHED ON ORNAMENTAL PLANTS, PLANT QUALITY IS AFFECTED. SEVERE INFESTATIONS FOUND IN COMMERCIAL GREENHOUSES MAY RESULT IN A QUARANTINE OF ALL INFESTED PLANTS. THE KEY PRESENTED HERE IS BASED ON EXTERNAL CHARACTERISTICS OF THE SOFT SCALES AND IS FOR USE WITH A HAND LENS. IT HAS BEEN PREPARED FOR PLANT SPECIALISTS, PLANT QUARANTINE INSPECTORS, COUNTY AGENTS, AND COMMERCIAL NURSERYMEN.

- 1 BODY OF ADULT FEMALE COVERED WITH WAXY SECRETION -----2  
 1' BODY OF ADULT FEMALE NAKED, NOT COVERED WITH WAXY SECRETION -----4  
 2(1) WAXY SECRETIONARY COVER, STAR-SHAPED; 3.5-4.5 MM ACROSS RAYS:  
 STELLATE SCALE, VINSONIA STELLIFERA (WESTW.) (FIG. 1).  
 REMARKS: ERADICATED FROM FLORIDA; COMMON ON ORCHIDS AND MUSA SPP.; SEE  
 DPI ENT. CIRC. No. 80, JAN. 1969, FOR OTHER HOSTS.  
 2' WAXY SECRETIONARY COVER, CIRCULAR TO OVAL, NOT STAR-SHAPED -----3  
 3(2') WAXY COVER, ROSE RED; LONGER THAN WIDE; WHITE SPIRACULAR BANDS CONSPICUOUS; 3.5-4.5 MM LONG:  
 RED WAX SCALE, CEROPLASTES RUBENS MASK. (FIG. 2).  
 REMARKS: COMMON ON AGLAONEMA SPP.; SEE DPI ENT. CIRC. No. 115, DEC. 1971,  
 FOR OTHER HOSTS.  
 3' WAXY COVER, DIRTY WHITE TO PINKISH; APPROXIMATELY CIRCULAR; SPIRACULAR BANDS INCONSPICUOUS;  
 2.5-3 MM IN DIAMETER; FLORIDA WAX SCALE, CEROPLASTES FLORIDENSIS COMST. (FIG. 3).  
 4(1') BODY HIGHLY CONVEX -----5  
 4' BODY FLAT OR SLIGHTLY TO MODERATELY CONVEX -----6  
 5(4) BODY WRINKLED, DARK BROWN, DORSUM WITH H-SHAPED RIDGE; 2.5-3.5 MM IN DIAMETER:  
 (MEXICAN BLACK SCALE), SAISSETIA MIRANDA (CKLL. & PARR.) (FIG. 4-A) OR  
 (CARIBBEAN BLACK SCALE), SAISSETIA NEGLECTA DELOTTO (NO FIG.).  
 REMARKS: SLIDE PREPARATIONS ARE REQUIRED FOR SPECIFIC IDENTIFICATION.  
S. MIRANDA (CKLL. & PARR.) APPEARS TO BE MOST COMMON SPECIES IN  
 FLORIDA.  
 5' BODY SMOOTH, YELLOWISH BROWN, DORSUM WITH H-SHAPED RIDGE; 1.5-3.5 MM IN DIAMETER:  
 HEMISPHERICAL SCALE, SAISSETIA COFFEA (WALKER) (FIG. 4-B).  
 6(4') BODY FLAT, DORSUM WITH CHECKERED OR CELLULAR PATTERN, DARK REDDISH BROWN; 2.5-4 MM LONG:  
 TESSELLATED SCALE, EUCALYMNATUS TESSELLATUS (SIGN.) (FIG. 5).  
 REMARKS: COMMON ON RIBBON BUSH, HOMALOCYCLADIUM PLATYCLADIUM BAILEY;  
 SEE DPI ENT. CIRC. No. 138, NOV. 1973, FOR OTHER HOSTS.  
 6' BODY SLIGHTLY TO MODERATELY CONVEX, DORSUM WITHOUT CHECKERED OR CELLULAR PATTERN -----7  
 7(6') BODY OVAL, SLIGHTLY CONVEX, DORSUM MOTTLED GREENISH BROWN; 2.5-4 MM LONG:  
 BROWN SOFT SCALE, COCCUS HESPERIDUM LINN. (FIG. 6).  
 REMARKS: A COMMON GREENHOUSE PEST.  
 7' BODY ELONGATE, MODERATELY CONVEX, YELLOWISH BROWN; 5-8 MM LONG:  
 LONG SOFT SCALE, COCCUS ELONGATUS (SIGN.) (FIG. 7).

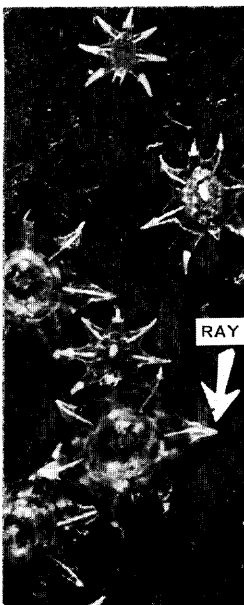


FIG. 2 RED WAX SCALE

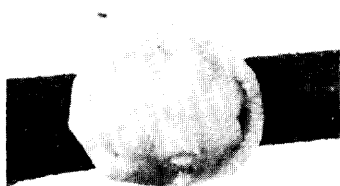


FIG. 3 FLORIDA WAX SCALE

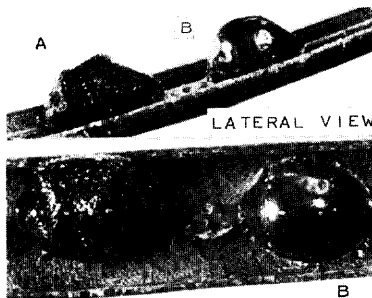


FIG. 4  
A - MEXICAN BLACK SCALE  
B - HEMISPHERICAL SCALE



FIG. 5 TESSELLATED SCALE

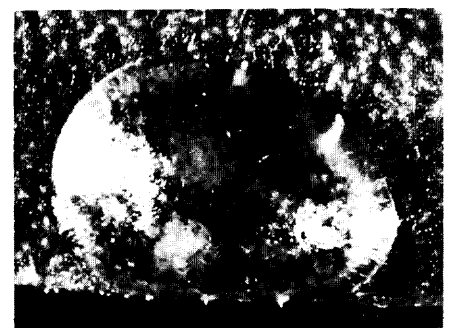


FIG. 6 BROWN SOFT SCALE



FIG. 7 LONG SOFT SCALE

<sup>1</sup>CONTRIBUTION No. 301, BUREAU OF ENTOMOLOGY, P. O. Box 1269, GAINESVILLE, FLORIDA 32602