

A TROPICAL ORB WEAVER, *ERIOPHORA RAVILLA*

(ARANEAE: ARANEIDAE)¹

G. B. Edwards²

INTRODUCTION: Among the several large orb weavers occurring in Florida is *Eriophora ravilla* (C. L. Koch). Unlike similar large spiders of the genus *Neoscona* (Edwards, 1984), *E. ravilla* is not a conspicuous member of the diurnal fauna during its adult stage. Nevertheless, nursery inspectors regularly encounter specimens of this species and submit them to the Division of Plant Industry for identification. Bites of this species are not known to cause serious effects to humans.

Eriophora ravilla belongs to a genus of primarily tropical species. Its range is largely circum-Caribbean, occurring in Florida, Louisiana, and Texas along the Gulf Coast of the United States; Mexico; throughout Central America; throughout the Greater and Lesser Antilles; the Bahamas; and in Colombia and Venezuela in northern South America. The extremes of its range are two disjunct records, one from Maryland in the U.S.A. and one from southeastern Brasil (Levi, 1970).

DESCRIPTION: Females vary from 12-24 mm in length and from nearly white to nearly black in color. Typically in Florida, females have a mostly reddish brown cephalothorax and legs, with darker femora. The dorsum of the abdomen is gray to brown. The venter of the abdomen has a black triangular mark pointing posteriorly; this mark is surrounded by gray laterally and by white anteriorly and posteriorly (Levi, 1970). In life, the anterior lateral corners of the abdomen are frequently bright yellow; unfortunately, this color fades to gray after lengthy preservation in alcohol. The integument is covered with white setae, especially on the carapace and legs.

Males (Fig. 1) vary from 9-13 mm in length. They are similar to females in color. The abdomen is much smaller than that of the female and is usually dark gray. The legs are usually banded. The carapace has a deep longitudinal thoracic groove (Levi, 1970). When the male is actively moving about, its palpi can be seen as large anterior structures which appear to flare out to the sides (Fig. 2).

Color and pattern variation is extensive in Florida juvenile specimens and in adults in more tropical areas. The abdominal dorsum may have a pattern of white spots (Fig. 3), may have a narrow central white stripe, the entire dorsum may be brilliant green in life, and two humps may be present posteriorly. The latter character, when present, further enhances the resemblance of juveniles to the genus *Eustala*, with which they are frequently confused (Levi, 1970).

HABITS AND HABITAT: *E. ravilla* inhabits open woodland, ranging from live oak in scrub areas to "hammock" (Levi, 1970). I have found it most frequently in mesophytic situations. Where the understory is fairly dense, *E. ravilla* will make webs in the tree canopy. I have taken a female from the top of a television antenna, about 16 m above ground.

¹/Contribution No. 638, Bureau of Entomology.

²/Arachnologist, FDACS, Division of Plant Industry, P.O. Box 1269, Gainesville, FL 32602.

Orb webs of adult female *E. ravilla* have a widely spaced spiral and may be over 1 m across (see photograph in Levi, 1977). The bridge thread supporting the web may be 6 m long (M. Stowe in Levi, 1977). The web is constructed after dark and the orb is taken down before dawn. The bridge and frame threads are probably left in place (Levi, 1977). The web probably catches many moths and other night flying insects; these spiders may be particularly beneficial along woodland borders of field agroecosystems and within orchards. It is known to occur in citrus groves in Florida (Mansour et al., 1982). All stages apparently occur throughout the year, but little else is known of its life cycle.

SURVEY AND DETECTION: During the day, *E. ravilla* may be found on the underside of leaves which are partially rolled and tied with silk, or occasionally in sparse silken retreats in sheltered corners of man-made structures. At night, the spiders may be seen hanging head down at the center of their webs. They may be captured in large vials and preserved in 70-80% alcohol (ethanol or isopropanol). An easy way to capture one alive is to put a plastic bag around the leaf containing the spider in its diurnal retreat, and then cutting the leaf from the branch.

LITERATURE CITED:

- Edwards, G. B. 1984. Large Florida orb weavers of the genus *Neoscona* (Araneae:Araneidae). Fla. Dept. Agric. Cons. Serv., Ent. Circ. 266:1-2.
- Levi, H. W. 1970. The *Ravilla* group of the orb weaver genus *Eriophora* in North America (Araneae:Araneidae). Psyche 77(3):280-302.
- _____. 1977. Caught in the intrigue of spider orb-webs. The Science Teacher 44(1):16-19.
- Mansour, F., J. W. Ross, G. B. Edwards, W. H. Whitcomb, and D. B. Richman. 1982. Spiders of Florida citrus groves. Florida Entomol. 65(4):514-522.

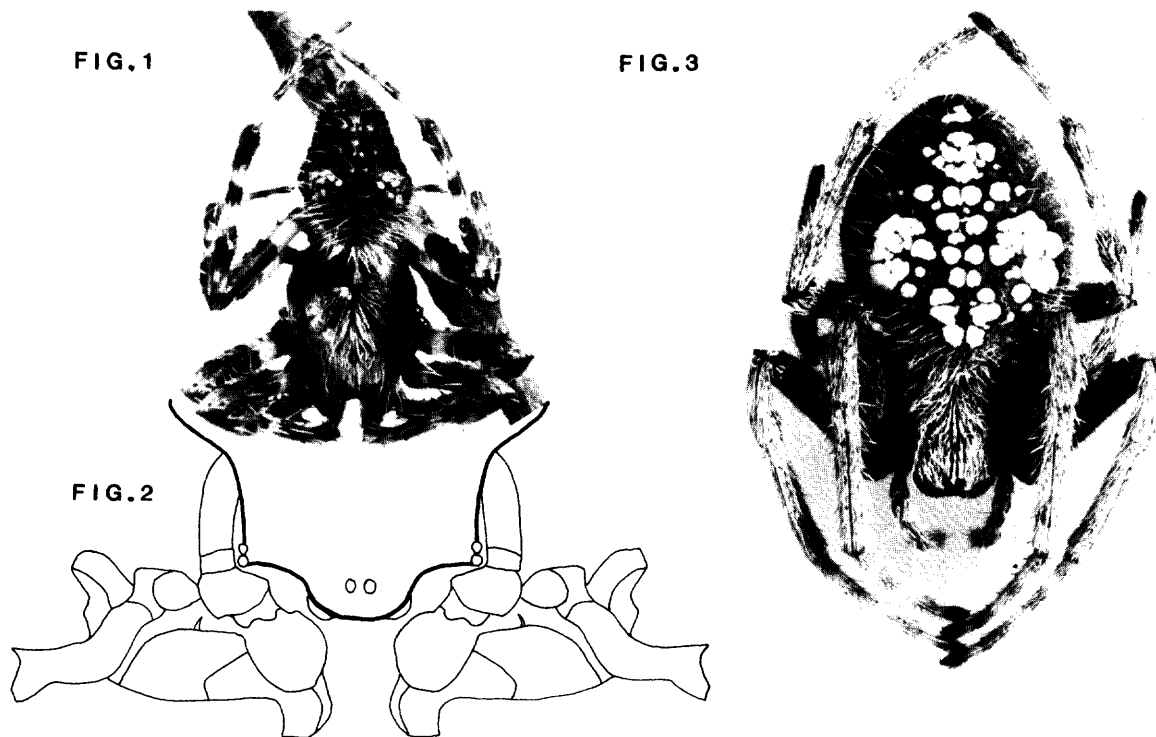


Fig. 1. Male *Eriophora ravilla*, 3.5 x.
 Fig. 2. Anterior dorsal carapace of male *Eriophora ravilla*, showing palpi.
 Fig. 3. Penultimate female *Eriophora ravilla*, 3.5 x, showing one type of color variation.